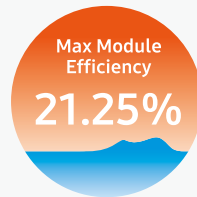
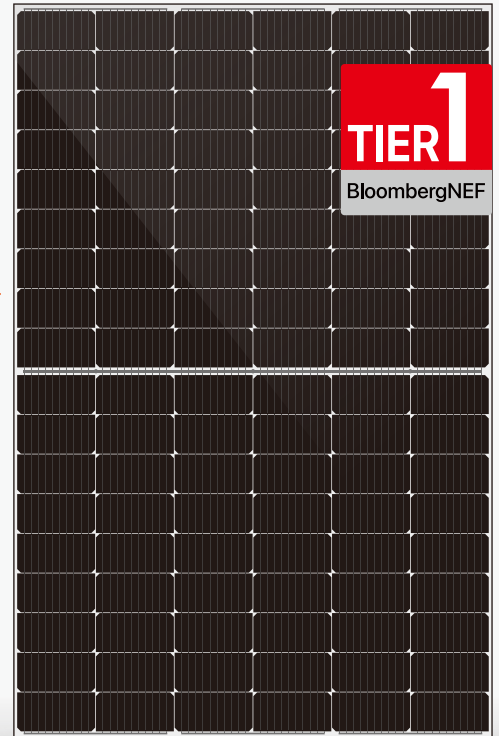


## DHM-54X10(BW)

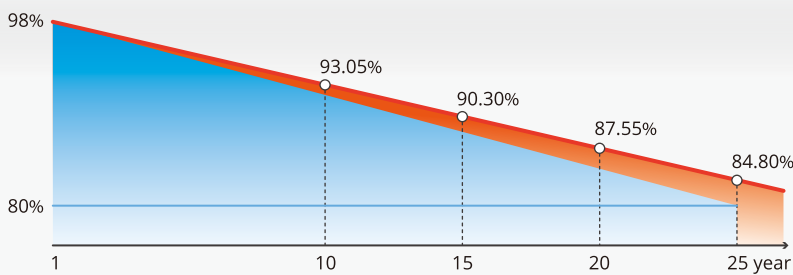
# 400~415 W

Half-Cell High Efficiency PV Module



### Quality Guarantee

**12-Year** material & technology warranty  
**25-Year** linear power output warranty



DAH Solar linear power output guarantee  
 Standard linear power output guarantee



#### More Power Generation

Larger size of light receiving area and higher module conversion efficiency



#### 10 Busbar Technology

Higher power collection density improves power generation



#### Stable Generation Performance

Guaranteed 0~+5W positive tolerance and slower power attenuation:  
 first year ≤2%, 0.55% per year from 2-25



#### Higher Power Gains and Lower Losses

Excellent low irradiance performance and low shadow loss



#### Process Optimized and Upgraded

Lower risk of hot spot and stronger anti-PID ability



#### Strong Environmental Adaptability and Great Durability

Certified by Dust-Sand, Salt-Mist, Ammonia etc. weather resistance tests and enhanced mechanical load: wind load (2400 Pa) and snow load (5400 Pa)

### Comprehensive Products and System Certificates



IEC 61215 / IEC 61730 / CE / FIDE / INMETRO

ISO 45001-

2018/International standards for occupational health & safety

ISO 14001-

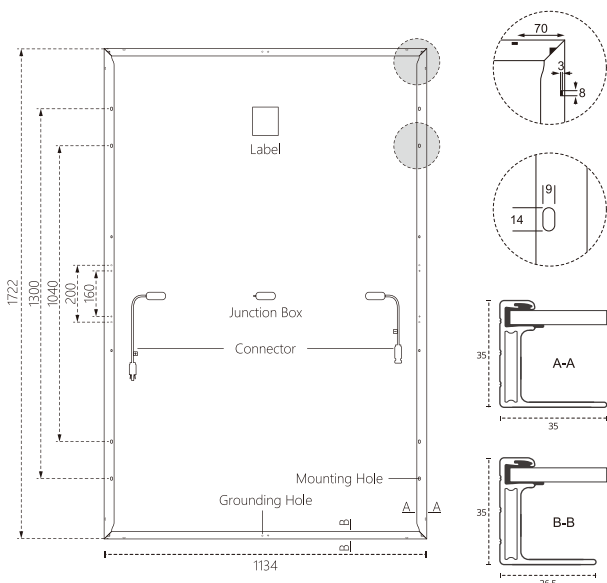
2015/Standards for environmental management system

ISO 9001-

2015/Quality management system

# DHM-54X10(BW)-400~415W

## Design



## Mechanical Specification

Cells Type  
**Mono 182×91mm**

Weight  
**22kg**

Output Cable  
(Including connector)  
No. of Cells  
Glass  
Junction box  
Connector

Dimension (L×W×T)  
**1722×1134×35mm**

Packing  
**31pcs/pallet, 806pcs/40HQ**

4.0mm<sup>2</sup>, 350/250mm in length,  
length can be customized  
108 (6×18)  
3.2mm High Transmission, Antireflection Coating  
IP68, 3 Bypass Diodes  
MC4 Compatible

## Operating Parameters

Maximum system voltage	1500V DC
Operating Temperature	-40 ~ +85°C
Maximum series fuse rating	25A
Snow load, frontside	5400Pa
Wind load, backside	2400Pa
Nominal operating cell temperature	45°C±2°C
Application level	Class A

## STC-Electrical Characteristics

Module Type	DHM-54X10(BW)			
Maximum Power (P <sub>max</sub> /W)	400	405	410	415
Open-circuit Voltage (V <sub>oc</sub> /V)	36.8	37.0	37.2	37.4
Maximum Power Voltage (V <sub>mp</sub> /V)	31.3	31.5	31.7	31.9
Short-circuit Current (I <sub>sc</sub> /A)	13.48	13.54	13.60	13.66
Maximum Power Current (I <sub>mp</sub> /A)	12.77	12.85	12.92	13.00
Module Efficiency (%)	20.48	20.74	21.00	21.25
Temperature Coefficient of I <sub>sc</sub>			0.05%/°C	
Temperature Coefficient of V <sub>oc</sub>			-0.31%/°C	
Temperature Coefficient of P <sub>max</sub>			-0.35%/°C	

Standard Test Environment : Irradiance 1000W/m<sup>2</sup>, Cell temperature 25°C, Spectrum AM1.5

## NOCT-Electrical Characteristics

Maximum Power (P <sub>max</sub> /W)	298	301	305	309
Open-circuit Voltage (V <sub>oc</sub> /V)	34.5	34.7	34.9	35.1
Maximum Power Voltage (V <sub>mp</sub> /V)	29.4	29.6	29.8	29.9
Short-circuit Current (I <sub>sc</sub> /A)	10.89	10.94	10.99	11.04
Maximum Power Current (I <sub>mp</sub> /A)	10.13	10.19	10.25	10.31

Standard Test Environment : Irradiance 800W/m<sup>2</sup>, Ambient temperature 20°C, Spectrum AM1.5, Wind speed 1m/s

## I-V Curve DHM-54X10(BW)-410W

